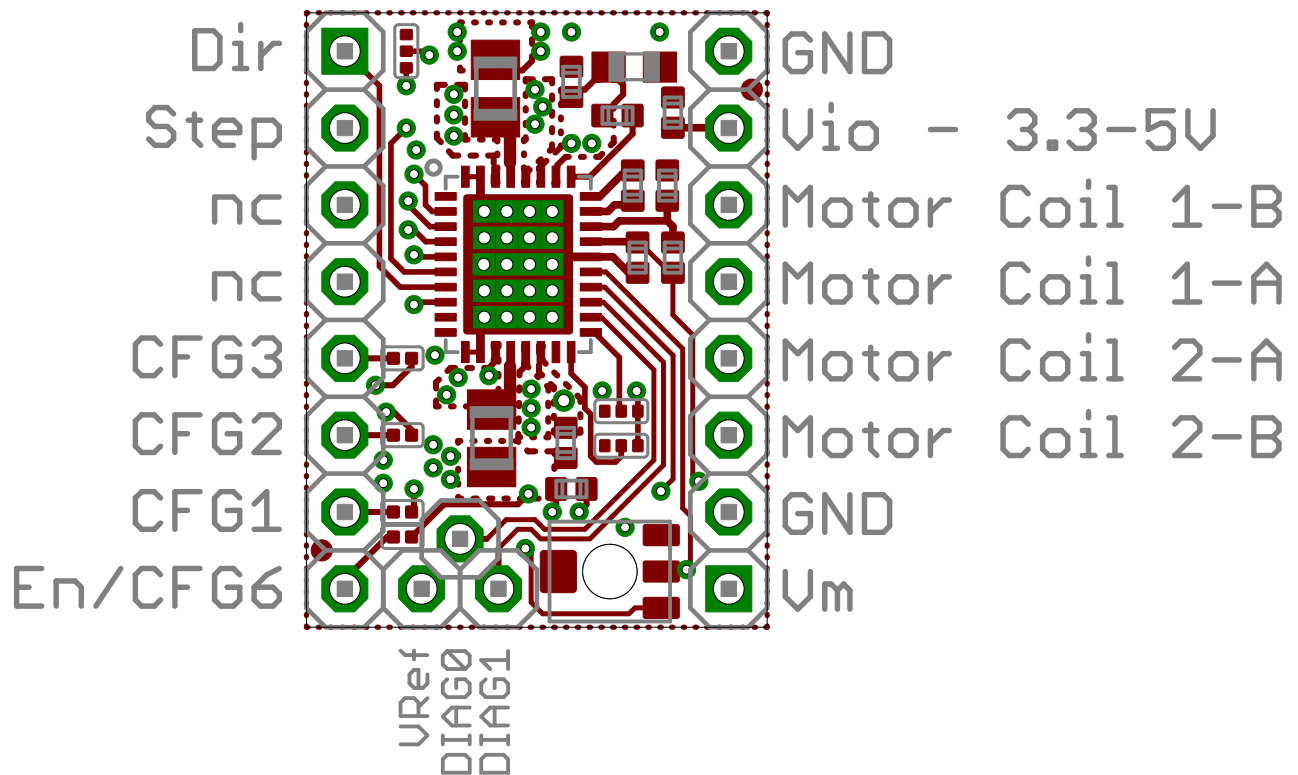


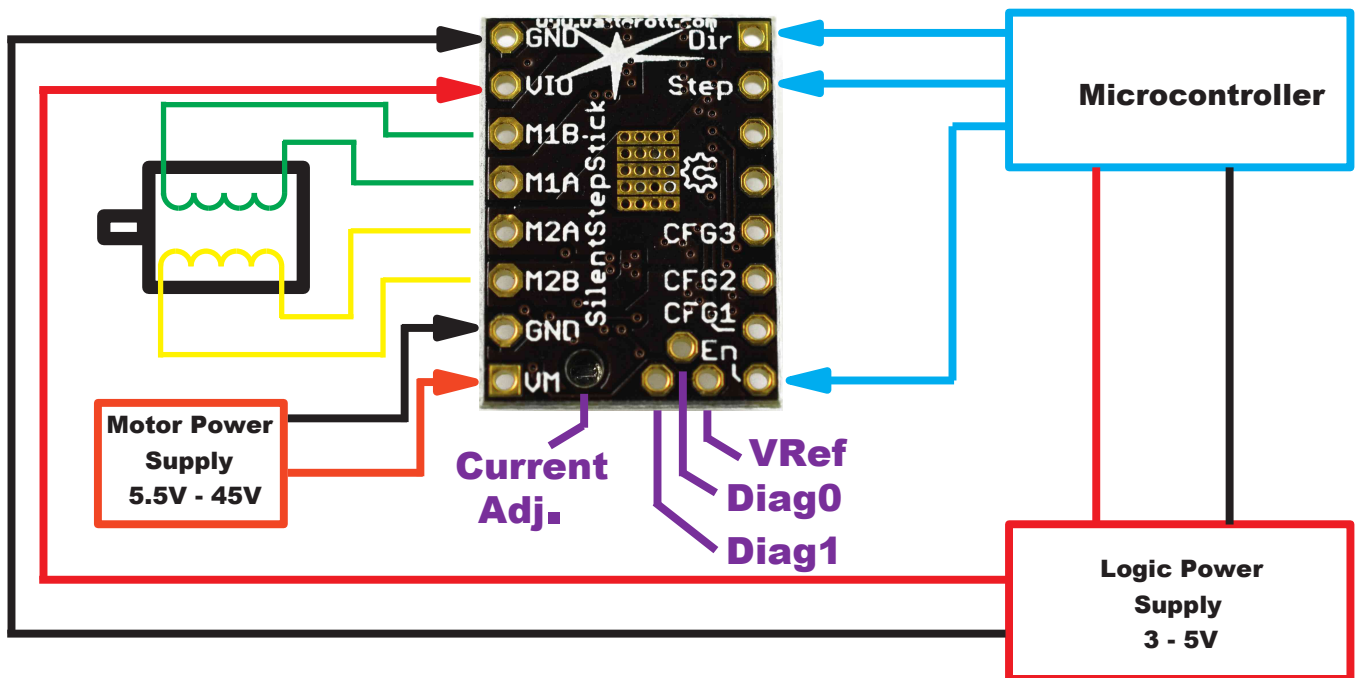


## Component Side View (Bottom)



# SilentStepStick

## Pinout



## Jumper Settings

<u>Jumper</u>	<u>Default</u>
CFG0	GND
CFG1	Closed
CFG2	Closed
CFG3	Open
CFG4	GND
CFG5	VCC
CFG6	Closed

# Pin Header

Pin configuration for stealthChop mode with 16 microsteps and interpolation to 256 microsteps.

